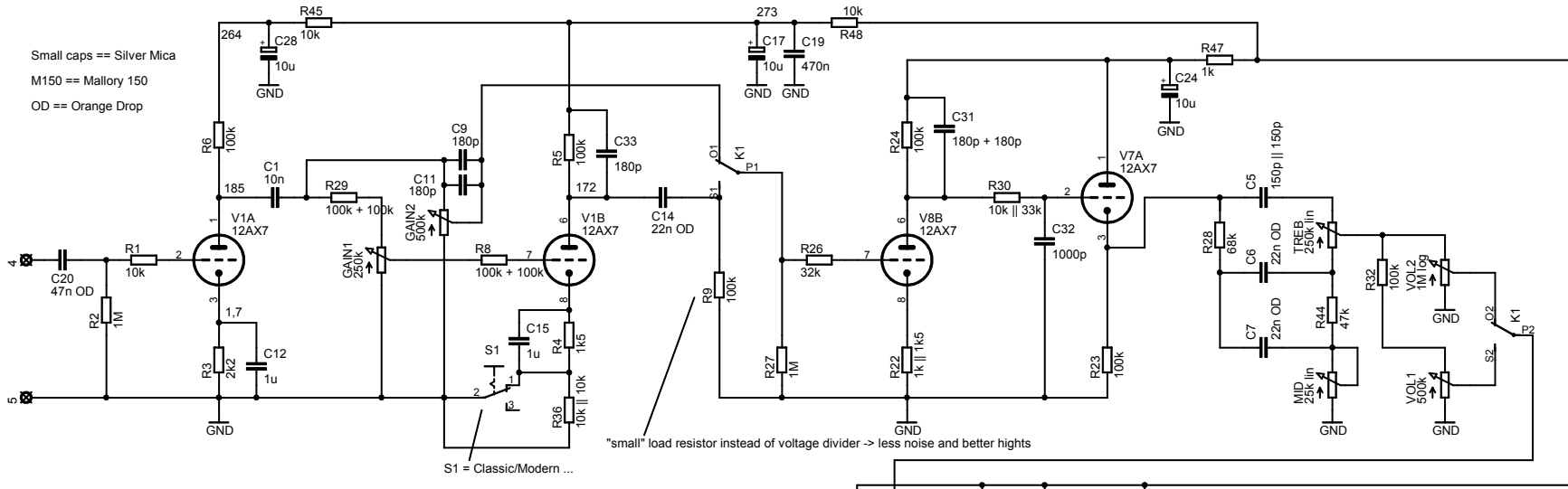
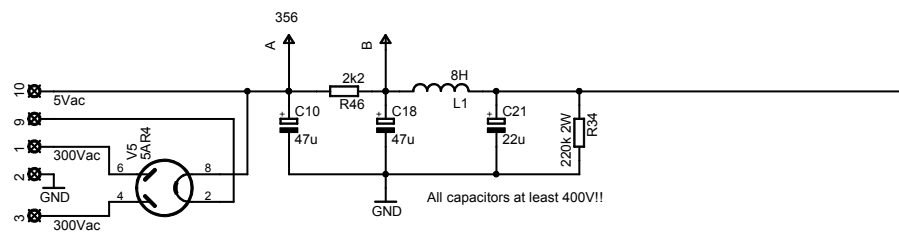


Small caps == Silver Mica
M150 == Mallory 150
OD == Orange Drop

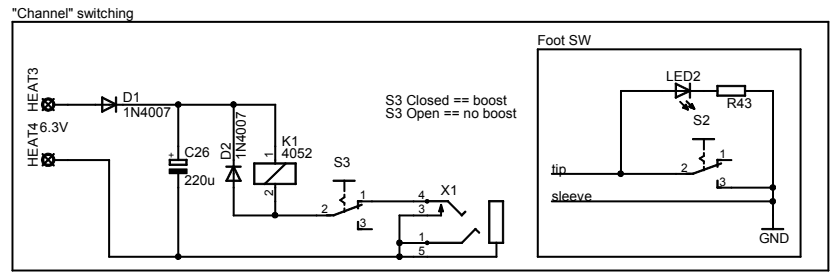


S1 = Classic/Modern ...

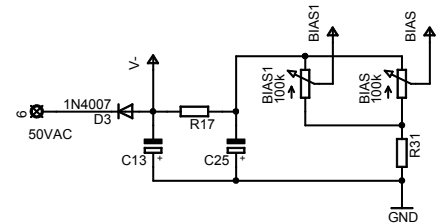
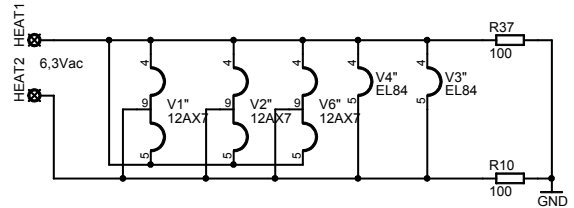
"small" load resistor instead of voltage divider -> less noise and better highs



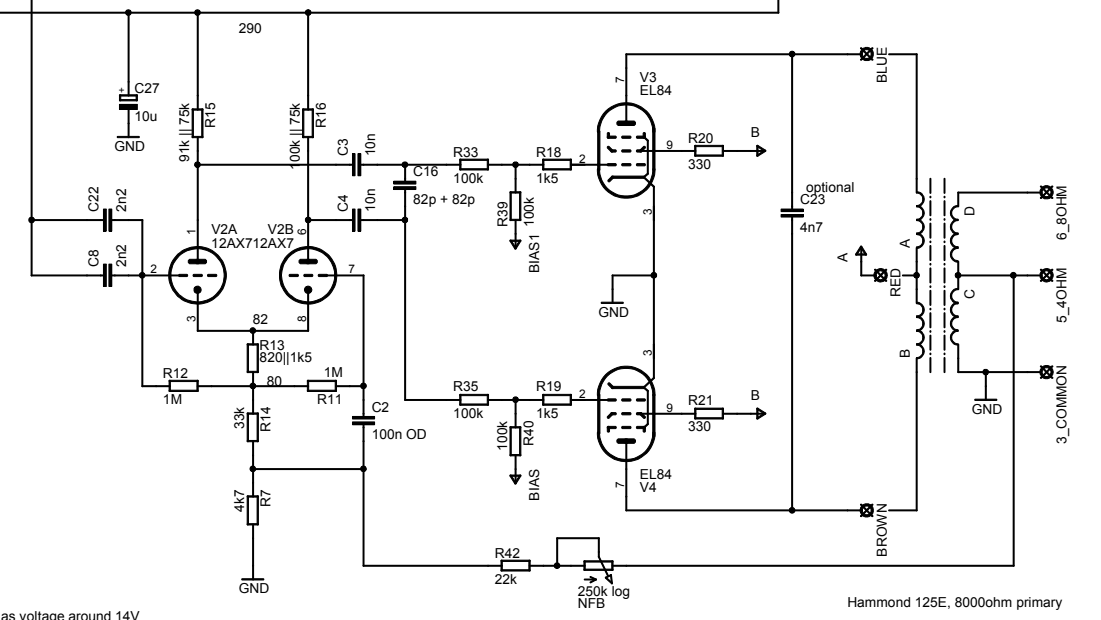
All capacitors at least 400V!!



S3 Closed == boost
S3 Open == no boost



bias voltage around 14V



PI adjusted for "optimal" drive to the EL84's

Hammond 125E, 8000ohm primary

DD-15 Tube Amp		Copyright: Pekka Lehtonen 2005	
TITLE: dd15_current			
Document Number:			REV: 1.15c
Date: 30.06.2006 23:59:58			Sheet: 1/1